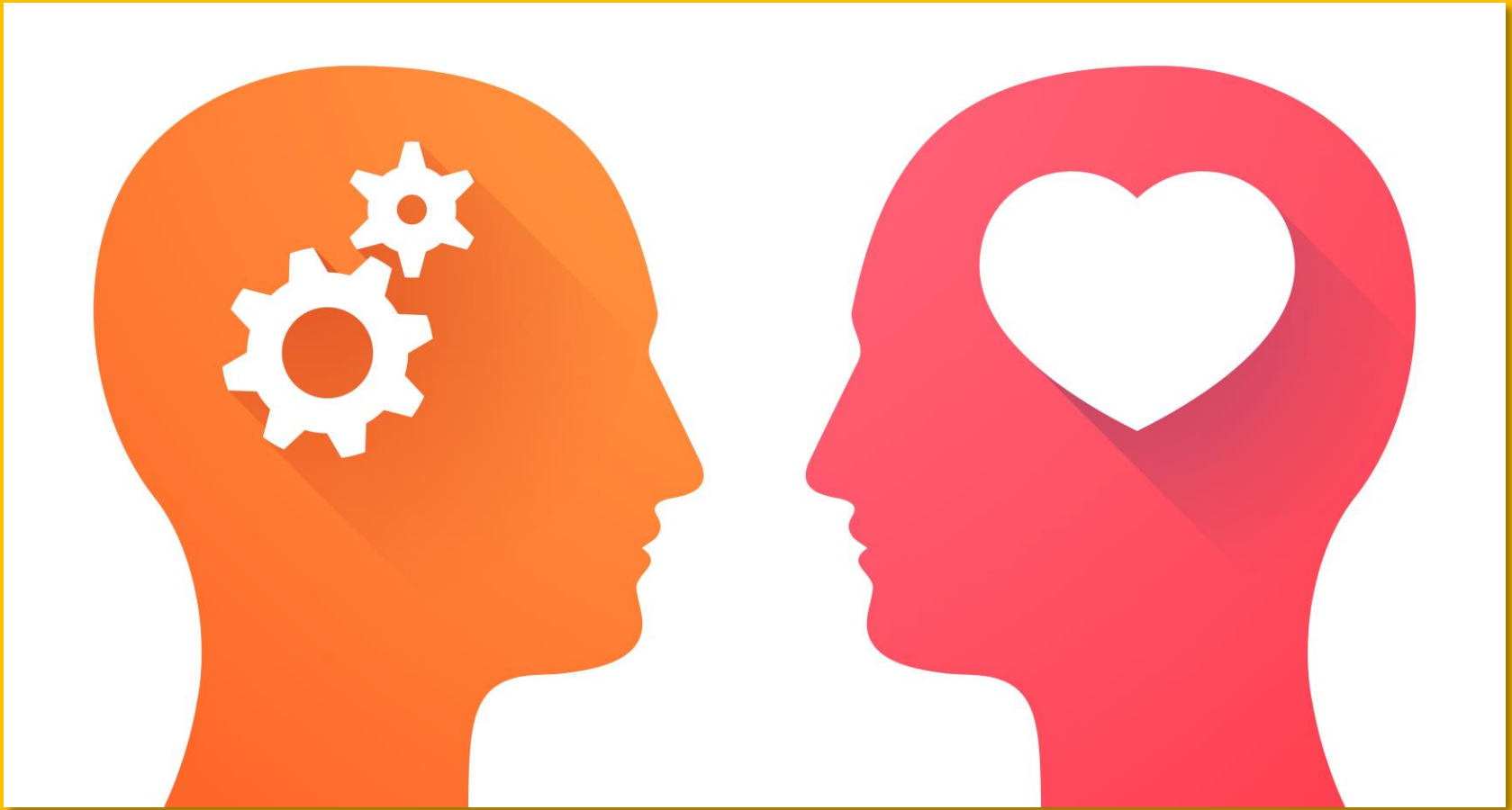


How organisations kill engagement through poor emotional intelligence



How organisations kill engagement through poor emotional intelligence



Rob Moss
Editor
Personnel Today



Tony Crabbe
Business psychologist
and author



Abigail Rappoport
CEO
Emoquo



Abigail Rappoport
CEO, Emoquo

Email: abigail@emoquo.com

Twitter: @arappoport

Web: www.emoquo.com



A hand is shown pointing at a tablet screen. The background is a soft blue gradient. Three text boxes are overlaid on the image: 'Emoquo' in the top right, 'Emotional intelligence' in the center, and 'Digital coaching' in the bottom right.


Emoquo

Emotional intelligence

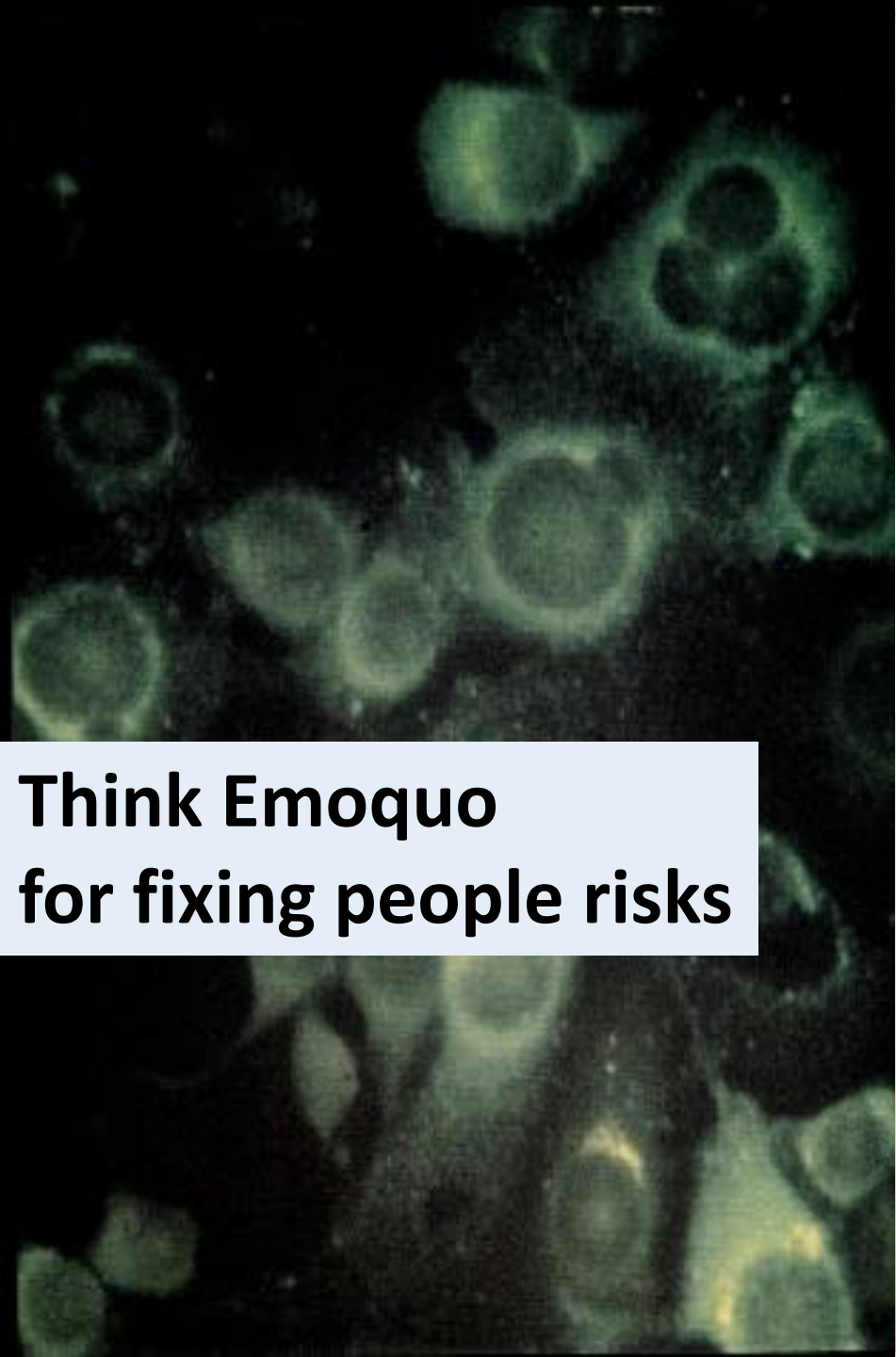
Digital coaching

Poll Q1: What is the top issue impacting employee engagement in your organisation?

- Manager effectiveness
- Change/transformation
- Culture
- Something else

A young woman with voluminous, curly brown hair is smiling and looking down at a white smartphone held in both hands. She is wearing a teal-colored t-shirt and white wired earbuds. A black fitness tracker is visible on her left wrist. The background is a blurred outdoor setting, possibly a city street or park, with a bridge or overpass visible in the distance. A semi-transparent white text box is overlaid on the left side of the image.

**Think Emoquo
for emotional wellbeing**



**Think Emoquo
for fixing people risks**



A man with short brown hair and a light beard, wearing a light blue button-down shirt, is shown in profile, looking down and to the right with his hand resting on his chin in a thoughtful pose. The background is a blurred indoor setting with other people. Overlaid on the center of the image is the text '68%' in a large, bold, black sans-serif font.

68%



A close-up photograph of a middle-aged man with grey hair, wearing a dark suit and a light blue shirt. He has a serious, intense expression and is looking directly at the camera. In the foreground, on the left side, the out-of-focus face of a woman is visible, looking towards the man. The background is a soft, out-of-focus grey.

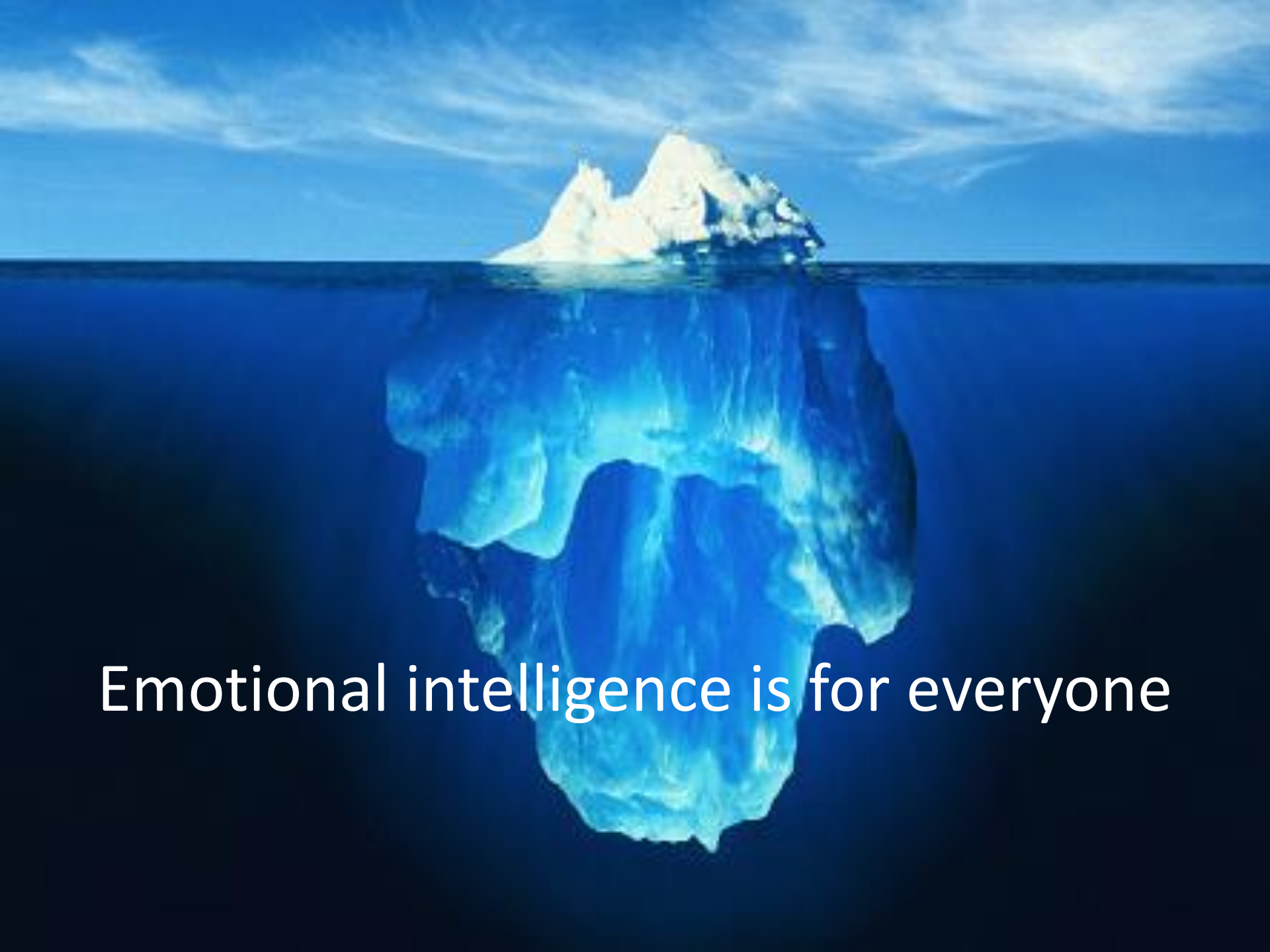
Conflict

Performance

Diversity

Little things • get bigger

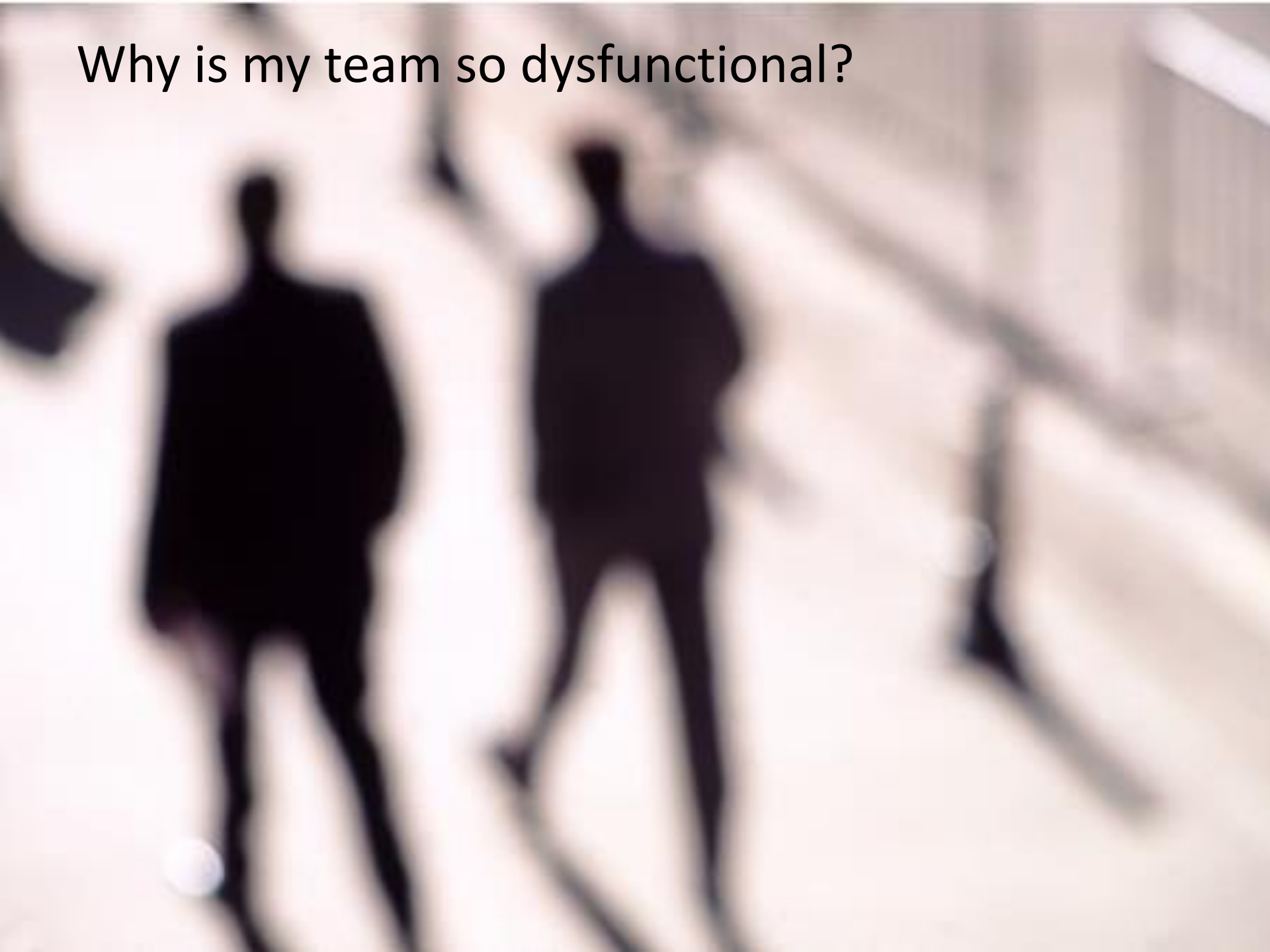




Emotional intelligence is for everyone



Why is my team so dysfunctional?



Poll Q2: To what extent does your managers' capability around emotional intelligence impact employee engagement?

- Has a significant impact
- Has some impact
- Has little or no impact
- Don't know

Emotional
intelligence is
for everyone

Little things
becoming big
things

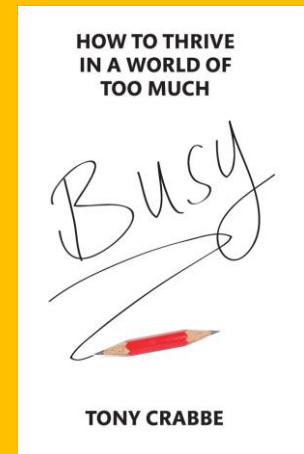
New approach to
EQ and
employee
engagement

Digital
coaching



www.emoquo.com
abigail@emoquo.com
@emoquo





Tony Crabbe
Business psychologist and author

Email: mail@tonycrabbe.com
Twitter: [@tonycrabbe](https://twitter.com/tonycrabbe)
Web: www.tonycrabbe.com

productivity

tony crabbe | business psychologist | doing things differently







WORLD
ECONOMIC
FORUM

problem solving

creativity

relationships

engagement-killing factories

tony crabbe | business psychologist | doing things differently





frustration



anxiety

emotions
as speed
bumps





it's not big

phubbing



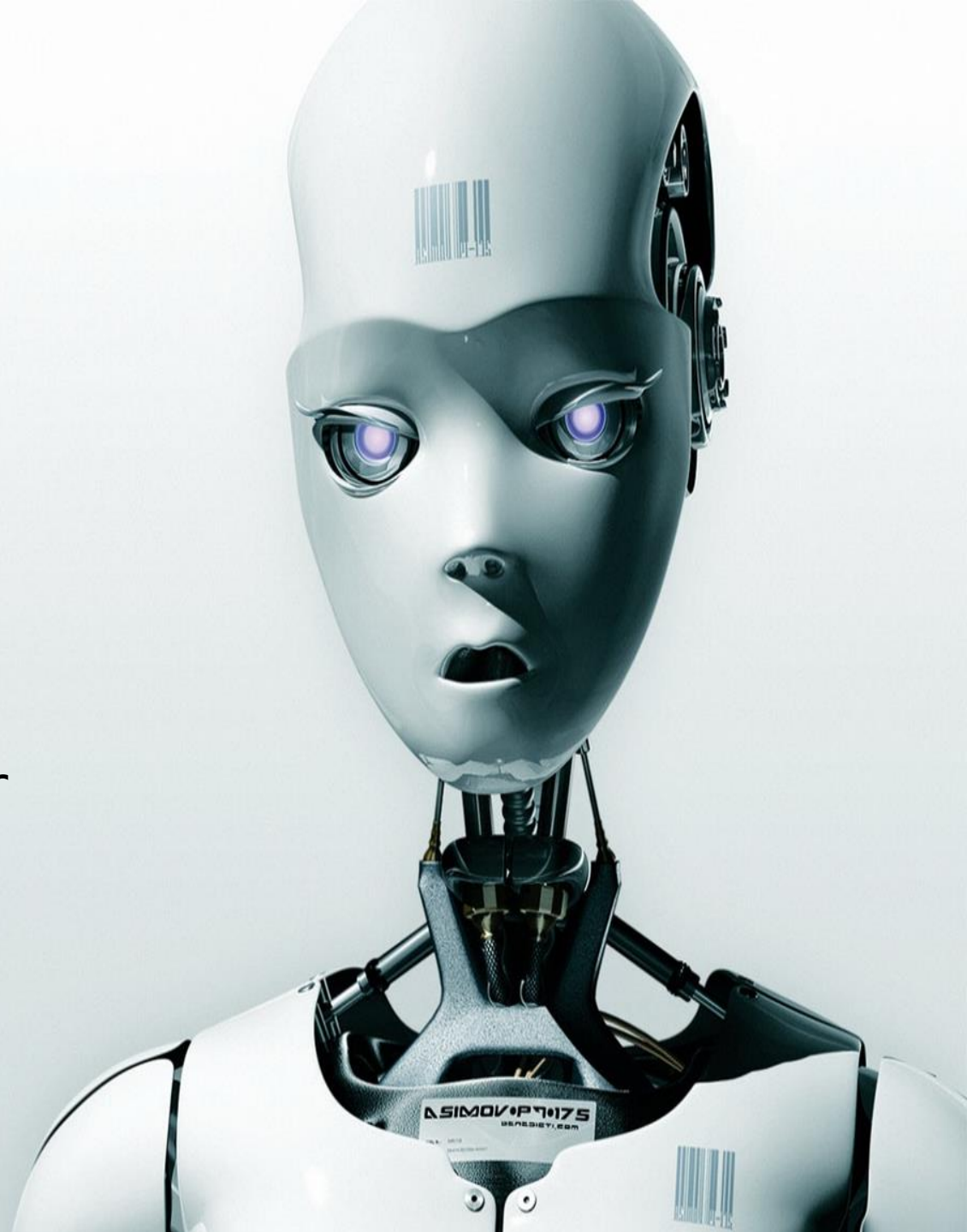


risky



Work
in
progress

The future for
humans...



International best
seller

Published in 10



'Life-changing' The Daily Express

Tony Crabbe **BUSY**



**How to thrive
in a world of
too much**

How organisations kill engagement through poor emotional intelligence



Rob Moss
Editor
Personnel Today



Tony Crabbe
Business psychologist
and author



Abigail Rappoport
CEO
Emoquo